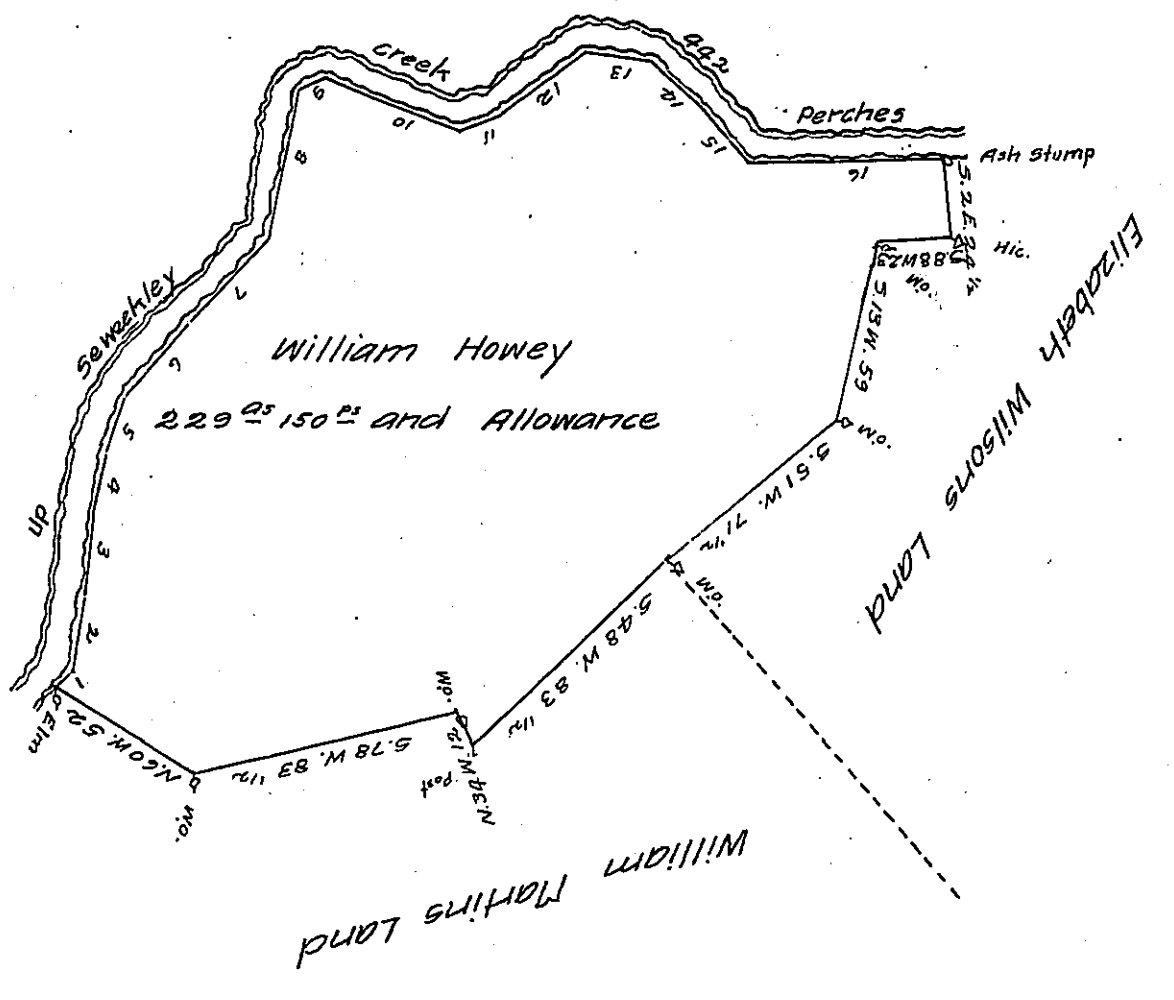


Number of Courses up Seweekley Creek
 Courses up Seweekley Creek
 Distances up Seweekley Creek

1	N.43 E.	7
2	N.10 E.	26
3	N.4 E.	23
4	N.12 E.	19
5	N.20 E.	17 1/2
6	N.37 E.	16
7	N.43 E.	54
8	N.14 E.	50
9	N.80 E.	8
10	N.69 E.	40
11	N.80 E.	18
12	N.55 E.	34
13	S.81 E.	18
14	S.52 E.	25
15	S.38 E.	20
16	East	66 1/2
Total Dist		442
Up Seweekley Creek		



In pursuance of an Order dated May 26th 1769. No. 3294 There was surveyed for William Howey the above described Tract of Land containing two hundred and twenty nine Acres and 150 perches with an Allowance proportioned to Six p. Cent Situate in South Huntingdon Township in the County of Westmoreland Survey'd May 9th 1806

p. John Moore D.S.

Samuel Cochran Esq^r
 SURV^r Gen^l of Penna

IN TESTIMONY that the above is a copy of the original remaining on file in the Department of Internal Affairs of Pennsylvania, made conformably to an Act of Assembly approved the 16th day of February, 1833, I have hereunto set my Hand and caused the Seal of said Department to be affixed at Harrisburg, this fourth day of May 1905

Joseph P. Pennington
 Secretary of Internal Affairs.